

ROYAL LYMINGTON YACHT CLUB



Part 1 KEELBOAT SAILING INSTRUCTIONS 2008

And GENERAL INFORMATION

The Royal Lympington Yacht Club extends a welcome to owners and crews of competing yachts and invites them to become temporary members on the occasions they are competing in the races covered by these Sailing Instructions. Please use and enjoy the Club during the racing.

ROYAL LYMINGTON YACHT CLUB
PART 1 KEELBOAT SAILING INSTRUCTIONS 2008

Organising Authority : Royal Lyminster Yacht Club

1. RULES

- 1.1 The races will be governed by the rules as defined in the 2005-2008 Racing Rules of Sailing (RRS), these Sailing Instructions and the Notice of Race, **except as any of these are changed by the Part 2 Sailing Instructions.**
- 1.2 RRS 28.1 is changed by addition of:-
"The Race Committee may disqualify (DSQ) without a hearing a boat that has broken this rule but only when a member of the Race Committee has seen the incident. A boat so penalised will be informed by notification in the race results." This also amends A5.
- 1.3 RRS 44.1 and 44.2 are changed so that only one turn, including one tack and one gybe, is required.
- 1.4 The second sentence of RRS 29.2 will not apply. If a general recall is given, the subsequent start for that Class will be as signalled.
- 1.5 RRS 64.1(a) is modified. In the case of an infringement to the RRS, excluding an infringement under Parts 1 and 2, the Protest Committee may decide what penalty to apply.
- 1.6 When less than approximately 75% of the starters in a class finish within the time limit, the Race Committee may score boats that did not finish. Scores will be based on the last mark at which the Race Committee recorded roundings. This changes RRS 35 & A3.
- 1.7 RRS 30.1 (I Flag Rule) is modified by deleting the words: "or its extensions".
- 1.8 RRS 32 is changed; see Part 1 Sailing Instructions 8.2.2 below.

2. CLASSES TO RACE and CLASS SIGNALS

Classes to be raced and class signals will be identified in Part 2 Sailing Instructions

3. SAFETY

See Notice of Race Section 3 and any amendments in Part 2 Sailing Instructions.

4 SCHEDULE OF RACES AND CLASS FLAGS

Each boat (other than XODs) is required to fly its appropriate class flag on its backstay or in some other conspicuous place.

4.2 Times of Racing will be published in Part 2 Sailing Instructions.

5. COMMUNICATION WITH COMPETITORS

- 5.1 Notices to competitors will be posted on the official notice board in the RLymYC.
- 5.2 Any change to Sailing Instructions will be posted no later than one hour before the programmed start of the race (s) to which they relate.
- 5.3 Broadcasts to competitors may be made on VHF channel 72. All VHF communication with the Race Committee shall normally take place on Ch 72. If this is unworkable the Race Committee shall display IC Flag **B** and Ch 77 shall be used instead. The Call sign of the Race Committee will be "Lyminster Race Control".
- 5.4 The Race Committee may announce individual and general recalls, time limits and the displaying of Postponement, Abandon and Shorten Course signals on VHF. See also Part 1 SI 7.6 & 7.7 below.
- 5.5 To comply with Part 1 SI 3.8 above, boats retiring from a race may report their retirement to the Race Committee on VHF or by telephoning **07071 672677**.

6. SIGNALS MADE ASHORE

- 6.1 All signals made ashore will be displayed from the RLymYC flagstaff.
- 6.2 When Flag AP is displayed ashore '1 minute' is replaced with 'not less than one hour' in Race Signals AP.

7. THE START

- 7.1 Starts may be made from the **RLymYC Starting Platform**, or a **Committee Boat**.
- 7.2 Races will be started using RRS 26 with the warning signal given 5 minutes before the starting signal.
- 7.3 The second sentence of RRS 29.2 will not apply. If a general recall is given, the subsequent start for that Class will be as signalled.
- 7.4 Boats shall keep clear of the start line when races for other classes are starting.
- 7.5 A boat shall not start later than 10 minutes after her class starting signal except when flag J is displayed when this instruction shall not apply.
- 7.6 In addition to RRS 29.1, **Individual Recalls** may be broadcast on VHF. Individual Recall details such as sail numbers and/or yacht names may subsequently be given, but not necessarily immediately after the start. It remains the responsibility of yachts to start correctly.
- 7.7 In addition to RRS 29.2, **General Recalls** may also be announced on VHF. The recalled race(s) will be restarted as signalled.

7.8 Platform Starts

- 7.8.1 **The Platform Starting Line** will be between the mast on the Platform displaying the RLymYC burgee and an outer starting line mark.
- 7.8.2 Boats shall identify themselves by displaying their sail numbers before the start of each race passing close to the Platform. Boats not so identified may not be recorded as finishers.
- 7.8.3 **Platform Outer Starting Line Mark**
 - 7.8.3.1 The outer starting line mark will be either an orange inflatable buoy with a blue striped waist, or Mark **D** (Club ODM).
 - 7.8.3.2 When the outer starting line mark is Mark **D** (Club ODM), a yellow flag will be displayed on the Platform at the preparatory signal.
- 7.8.4 An orange inner limit mark may be laid close to the Platform; this shall have the same required side as the Platform.
- 7.8.5 As an aid to competitors, in certain conditions a pink buoy may be laid in the vicinity of the start line to indicate a 2 metre minimum depth.

7.9 Committee Boat Starts

- 7.9.1 Boats shall identify themselves by displaying their sail numbers before the start of each race passing close to the Committee Boat on the opposite side to the starting line. Boats not so identified may not be recorded as finishers.
- 7.9.2 The starting line will be between a staff displaying an orange flag on the Committee Boat and an outer starting line mark.
- 7.9.3 **Outer Starting Line Mark** will be an orange inflatable buoy with a blue striped waist.
- 7.9.4 Limit mark(s) may be laid adjacent to the Committee Boat. If so laid, the limit mark(s) will be inflatable orange and shall be passed on the same side as the Committee Boat.
- 7.9.5 When a race does not have an advised starting time, the Attention Signal, an orange flag, will be displayed with one sound signal at least 5 minutes before the warning signal of the first class to race.

8. THE FINISH

8.1 **Races started from the Platform** will finish at one of three Finishing Lines as follows:

- a) **The Platform Finishing Line** is between the mast on the Platform displaying the RLymYC burgee and an orange inflatable buoy with black and white chequered waist. If a chequered buoy cannot be laid, the outer limit mark will be Mark D, when a yellow flag shall be displayed at the Platform, after the start.
- b) **The River Line:** between the river mouth yellow, East Reach (**W**) and yellow and red, West Reach (**@**) buoys.
- c) **The Club Line:** between the nearer black and white post on the east bank of the Lymington River and an orange pole bearing an X top mark on the Club balcony.

8.1.1 The finishing line to be used will be indicated by a board bearing an orange letter on a black background:

Letter P :	The Platform Line
Letter R :	The River Line
Letter C :	The Club Line

8.2 **Races started from a Committee Boat.**

- 8.2.1 The finishing line will be between a staff displaying a blue flag on the finishing boat and an outer finishing line mark, which will be an orange inflatable buoy with black and white chequered waist. This will usually be on the opposite side of the Committee Boat from the Start Line.
- 8.2.2 RRS 32 is changed. Should a race be retrospectively shortened by displaying IC flags **S** over **N** with two sound signals, the finishing order may be determined from the positions at the last mark or finishing line at which the boats' positions were recorded by the Race Committee.

8.3 **Club Line finish**

When a Club Finish Line is designated, spinnakers must not be flown when boats are north of a line between Tar Barrel and Seymours posts.

9. COURSES

- 9.1 The course to be sailed should normally be notified no later than 10 minutes before the start, **unless amended by Part 2 Sailing Instructions.**
- 9.2 Each mark has been allocated a letter or number, as shown in **Appendix 1 to these SI.** The course to be sailed will be indicated by coloured boards. The boards will be displayed in the order in which the marks shall be rounded or passed, marks shown on a green background to starboard, marks on a red background to port. An entire upper row of letters, numbers, or symbols shall be read before any part of any lower row. All marks shall be rounding marks unless the compass bearing to the next mark changes less than 90° from the compass bearing between the mark and its immediately preceding mark.
- 9.3 If more than one round is to be sailed, diamond symbols shall be displayed after the mark boards. The number of diamond symbols shall indicate the number of rounds. For a designated **Platform or Committee Boat Finish**, boats shall pass through the Finishing Line from the direction of the previous mark, at the end of each round.
- 9.4 **Courses shall be displayed in accordance with Part 2 Sailing Instructions.**
- 9.5 If a Course or Courses are changed after they have been displayed or announced on VHF, the remaining start(s) will be postponed by displaying IC Pennant AP.
- 9.6 The following shall only be passed on the channel or seaward side after starting and while racing:
- a) East Reach and West Reach buoys
 - b) Cross Boom Post
 - c) Ryans Post (no 10a); No. 11 Post
 - d) The Platform and the inner limit mark which may be laid close to it.
 - e) The barrier off Durns Point
 - f) Pennington Outfall Beacon, except for the XOD, Folkboat and Small Dayboat Class
 - g) The wave barrier near Lymington Yacht Haven.
 - h) A plain yellow spherical buoy approx one metre in diameter, situated south east of the inner trot of harbour moorings to the west of Yarmouth Harbour entrance.
Lat 50° 42' 53"N, Long 001° 30' 02"W.
- 9.7 When Moveable marks are used, their bearing and distance from the Start may be displayed or announced on VHF. Their co-ordinates may also be announced on VHF.
- 9.8 Should any fixed mark of the course be missing, it may be replaced by an inflatable mark, or a Race Committee Boat displaying IC Flag **M**.
- 9.9 When a Club or River Finish Line is displayed on the Starting Platform and Mark **D** is the last mark of the course it shall be a passing mark, notwithstanding that the alteration of course may be more than 90 degrees.

10. TIME LIMITS

- 10.1 **Time Limits will be specified in Part 2 Sailing Instructions**

11. SCORING

- 11.1 **The scoring system to be used will be specified in Part 2 Sailing Instructions.**
- 11.2 **DNF, RET & RAF** shall be awarded **three points more than the last finisher** in that race, but no more than the total entry in the race.
OCS shall be awarded **one point more** than the **number of entries** in that race.
DSQ shall be awarded **one point more** than the **number of boats** entered in the **series**.
DNC shall be awarded points **equal to the series entry**.
- 11.3 Boats unable to race due to a member of the crew being requested by the Race Committee to assist in the running of the race shall be awarded points equal to the average of the points awarded to her in the races that she shall count in the series. Average points shall not be awarded for more than 50% of the races she will count in the series. The Results Officer shall award "average points" for each race in accordance with the names shown on the back of the results sheet prepared by the Race Officer.

12. PROTESTS

- 12.1 Protests shall be written on RYA forms available from the RLymYC Race Office and delivered there within one hour of the finish of the protesting boat
- 12.2 RYA Rules Dispute Advisory and Arbitration Hearings will apply.
- 12.3 If at an Arbitration hearing a boat is identified as having broken a rule, she may exonerate herself by taking the exoneration penalty prior to the start of the protest hearing.
- 12.4 The exoneration penalty is 20% of boats ranking as starters, to a minimum of 2 and a maximum of 5 points. However if a boat caused injury or serious damage, or gained a significant advantage in the race or series by her breach, her exoneration penalty shall be to retire.

END

GENERAL INFORMATION (Not Part of the Sailing Instructions)

1. The following chartlets are not intended for navigation purposes.
2. Updated copies of the chartlets, mark positions and descriptions can be downloaded from the RLym Club Website at www.rlymyc.org.uk/upload/racing/documents/
3. Laminated copies of these chartlets, mark positions etc can be purchased for a nominal sum from the Club office.

Appendix 1 - NAVIGATIONAL BUOYS AND SPECIAL RACING MARKS – as at March 2007

Top marks may not be as described. Distances given are approximate.

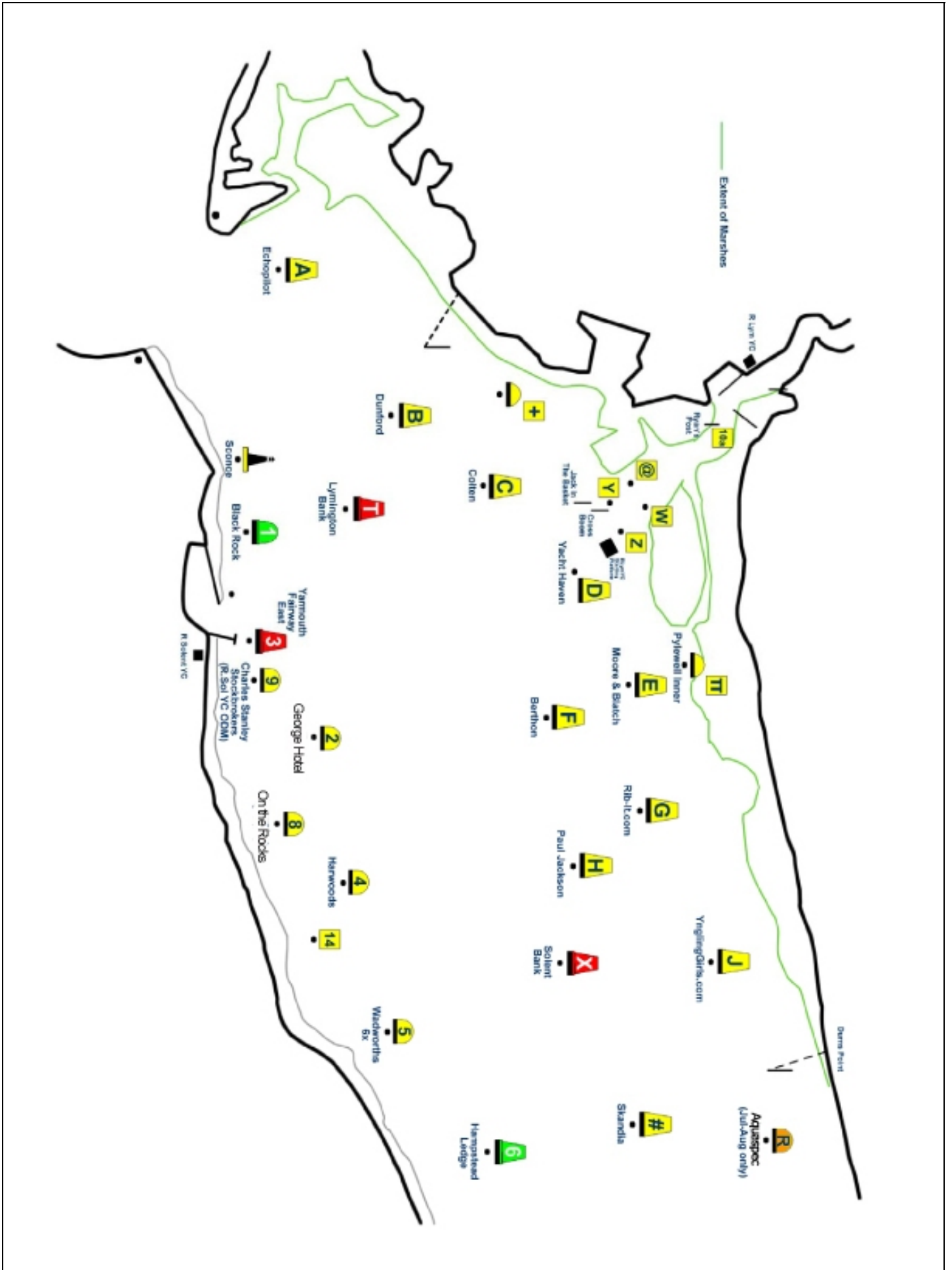
Mark	Name	Sponsored by	Description / Approx Location
A	HURST	ECHOPILOT	Yellow spherical buoy with X topmark, marked "Echopilot", 0.4 miles NE of Hurst Light.
B	PENNINGTON	DUNFORD	Yellow buoy with X topmark, marked "Dunford", 0.2 miles SE of Pennington Sewer Beacon
C	OXEY	COLTEN	Yellow buoy with X topmark, marked "Colten", 0.4 miles SE of entrance to Oxey Lake.
D	R Lym YC ODM	YACHT HAVEN	Yellow buoy with X topmark, marked "Yacht Haven", 0.2 miles SE of the Platform.
E	PYLEWELL	MOORE BLATCH	Yellow buoy with X topmark, marked "Moore Blatch", 0.3 miles SE of entrance to Pylewell Lake.
F	BERTHON		Yellow spherical buoy marked "Berthon", 0.9 miles E of Jack in the Basket.
G	TANNERS	rib-it.com	Yellow buoy with X topmark, marked "rib-it.com", 0.4 miles SE of entrance to Tanners Lake.
H	JACKSON	PAUL JACKSON	Yellow buoy with X topmark, marked "Paul Jackson", 0.5 miles SE of Tanners buoy.
J	SOWLEY	YnglingGirls.com	Yellow buoy marked "YnglingGirls.com", 0.4 miles SSW of the end of the obstruction off Durns Pt.
K	WEST LEPE		RED Navigational Buoy.
L	Committee Boat OUTER FINISHING LINE MARK		Orange inflatable buoy with black & white chequered waist. Boats shall pass between the buoy and the Committee Boat.
M, N, P, Q	MOVEABLE MARKS		See Part 2 Sailing Instructions.
R	DURNS	AQUASPEC	Orange buoy, 0.7 miles E of Durns Point.
T	LYMINGTON BANK		RED Navigational Buoy.
W	East Reach		Yellow buoy to the east of the river entrance.
@	West Reach		Yellow and red buoy to the west of the river entrance.
X	SOLENT BANK		RED Navigational Buoy.
#	SKANDIA		Yellow buoy marked "Skandia", 0.75 miles SE of the end of the obstruction off Durns Point.
1	BLACK ROCK		GREEN Navigational Buoy.
2	GEORGE HOTEL		Yellow spherical buoy, 0.4 miles NE of Yarmouth Pier.
3	EAST FAIRWAY BUOY		Red buoy marking the eastern approach to Yarmouth Harbour.
4	HARWOODS		Yellow spherical buoy marked "Harwoods", 0.6 miles E of The George Hotel buoy.
5	WADWORTH 6X		Yellow buoy with X topmark, marked "Wadworth 6X", 1 mile SW of Hamstead Ledge buoy.
6	HAMSTEAD LEDGE		GREEN Navigational Buoy.
7	SALTMEAD		GREEN Navigational Buoy.
8	ON THE ROCKS		(Formerly Kingston & Grist) Yellow buoy approx 0.25 miles SW of Harwoods buoy.
9	R SOLENT YC ODM	Charles Stanley Stockbrokers	Yellow buoy. 0.2 miles north of the R SolYC signal flag staff.
+	BHG Marine		Yellow LTSC dinghy mark off west end of Oxey Lake
π	Pylewell Inner		Yellow buoy with X topmark near the southeastern entrance to Pylewell Lake.

◆◆ 2 Diamonds displayed after course symbols indicates that the course shall be sailed twice round

◆◆◆ 3 Diamonds displayed after course symbols indicates that the course shall be sailed three times round

West Solent Mark Positions – as at March 2007

WGS 84 (Approx)		BUOY	SPONSOR
50 42.81 N 01 32.53 W	A	HURST	Echopilot
50 43.42 N 01 31.57 W	B	PENNINGTON	Dunford
50 43.86 N 01 30.87 W	C	OXEY	Colten
50 44.18 N 01 30.09 W	D	R Lym YC ODM	Yacht Haven
50 44.58 N 01 29.43 W	E	PYLEWELL	Moore Blatch
50 44.21 N 01 29.23 W	F	BERTHON	Berthon
50 44.80 N 01 28.50 W	G	TANNERS	Rib-it.com
50 44.31 N 01 28.19 W	H	JACKSON	Paul Jackson
50 45.11 N 01 27.33 W	J	SOWLEY	YnglingGirls.com
50 44.83 N 01 26.12 W	#	SKANDIA	Skandia
50 45.23 N 01 24.04 W	K	WEST LEPE	
50 45.43 N 01 25.91 W	R	DURNS	Aquaspec
50 43.10 N 01 30.85 W	T	LYMINGTON BANK	
50 44.23 N 01 27.37 W	X	SOLENT BANK	
50 42.60 N 01 30.68 W	1	BLACK ROCK	
50 42.85 N 01 29.40 W	2	GEORGE HOTEL	The George Hotel
50 42.64 N 01 29.92 W	3	EAST FAIRWAY BUOY	
50 42.86 N 01 28.55 W	4	HARWOODS	Harwoods
50 43.14 N 01 27.54 W	5	WADWORTH 6X	Wadworth
50 43.87 N 01 26.23 W	6	HAMSTEAD LEDGE	
50 44.52 N 01 23.07 W	7	SALTMEAD	
50 42.75 N 01 28.70 W	8	ON THE ROCKS	
50 42.70 N 01 29.73 W	9	R SOL YC ODM	Charles Stanley Stockbrokers
50 44.42 N 01 30.42 W		RLymYC PLATFORM	



- Marks and their designators**
- B Pennington (sponsored by Duntford)
 - C Oxy (sponsored by Collier)
 - D RLYM YC, ODM (sponsored by Yacht Haven)
 - E Pyewell (sponsored by Accounting Answers)
 - F Berthon
 - G Tanners (sponsored by rbi-ll.com)
 - H Jackson (sponsored by Paul Jackson)
 - J Moveable Mark: Orange dan buoy for Classes 2, 3 and 4
 - K Moveable Mark: Black dan buoy for Classes 2, 3 and 4
 - L The Committee Boat Finishing Line
 - M Moveable Mark: Orange
 - N Moveable Mark: Black
 - P West Mark (sponsored by Scott Bailey)
 - R* The River Finishing Line
 - S East Mark (sponsored by Sanders Sales)
 - T Lyrington Bank
 - U Yellow Mark in Oxy Lake
 - V Pyewell Island
 - W East Reach, (Yellow)
 - X Solent Bank
 - Y Black and Orange Mark
 - Z Black and White Mark
 - LT Pyewell Inner
 - + BHG
 - @ West Reach, (Red and Yellow)
 - # The Club Finishing Line
 - 10 Cocked hat
 - 10a Ryans Post (Inshore of No 10 Post)
 - u Ter Barrel
 - i Enticott Post
 - n Seymour's Post
 - XB Cross Boom

